



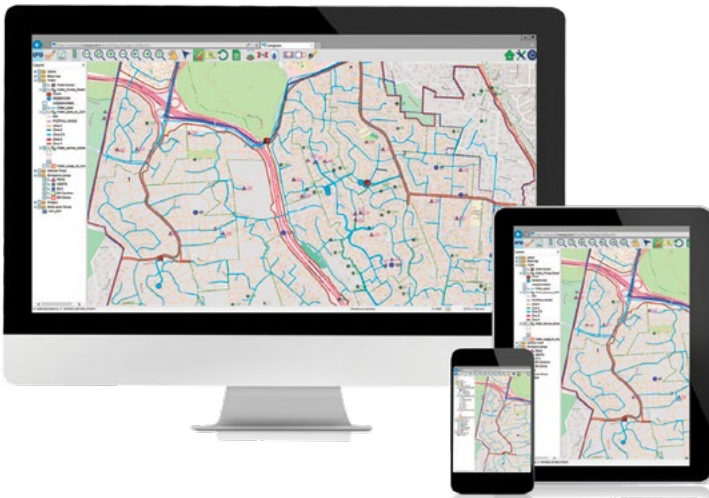
# A Smarter Business Intelligence Geoportal



The challenge of bringing corporate-wide data together is a common business problem. It's not unusual to find asset information held in one database and customer data held in another. Harnessing the power of a geoportal—a web-delivered application equipped to connect and present both geospatial and other corporate information—enlighten gives you reliable access to diverse data sources for smarter planning, management, and decision making.

## Simple. Robust. Smart.

Adding location to data brings value and dimension to your information. enlighten is designed to reach across your corporate applications to bring spatial and attribute data together for clearer, more accurate presentation. Easy to deploy and configure, enlighten's seamless integration enables users to quickly define searches, query data, and retrieve critical information from multiple data sources.



With Open Spatial enlighten, there is no need for programming knowledge or specialized software. The database-driven spatial analysis is accomplished through a web-browser, eliminating reliance on client-side software, reducing the cost of ownership and the need for on-going support, frequent upgrades, and costly maintenance.

As a commercial-off-the-shelf product, enlighten delivers a wealth of functionality from day one. The improved productivity, enhanced decision making, rapid deployment, and expert commercial support are all factors that add up to enlighten being an excellent business decision.

## Simple, Powerful Tools

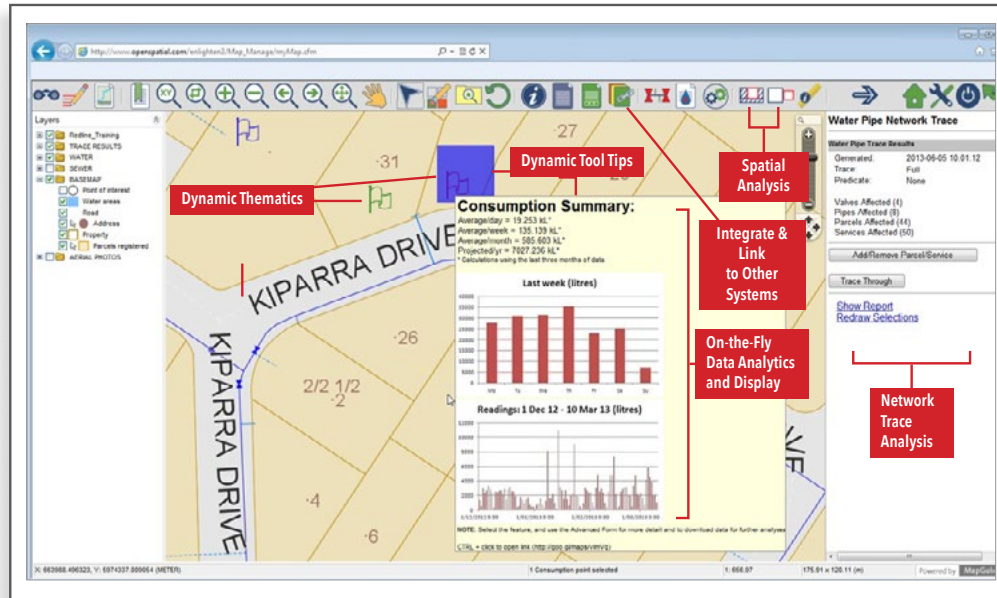
- Simple user interface
- Zoom and layer control
- Search
- Redline
- Select and repeat
- Display data from multiple sources

The screenshot displays the Open Spatial enlighten web application interface. The top section shows a map with various layers and a search window. The search window includes a search input field, a dropdown menu for 'Address - Parcel', and search criteria for 'Site Address', 'Map Lot', and 'Fee Owner'. The 'Advanced Form' section on the right contains a table of parcels with columns for 'PFI', 'Lot Numb', 'Plan No', 'Spi', 'Desc', 'Type', and 'Lga Code'. The table lists three parcels with their respective details. Below the table, there are tabs for 'Parcels', 'Parcel Notes', 'Parcel WaterServices', 'Parcel Water Pipe', and 'Parcel Address'. The 'Parcels' tab is active, showing a detailed view of a specific parcel with fields for 'Plan No', 'Sec', 'Spi Code', 'Subdiv', 'Ufi', 'Block', 'Crown Status', 'Lga Code', 'P Number', and 'Parcel PFI (At Table)'. A 'Hyperlink to Reference Document' is provided for the selected parcel. The bottom section shows a map of the area, with a 'Data Drill Down & Reporting' label.

**Simple, yet robust, functionality provides easy access to your data sources enabling you to make smarter decisions.**

**Data Drill Down & Reporting**

# Integration & Analysis



Designed to reach across corporate applications to bring spatial and attribute data together for clearer, more accurate presentation

The screenshot displays the enlighten3 Map Administration interface. The left sidebar contains navigation links: Basic Forms, Advanced Forms, Edit Form (highlighted), Add Form, Delete Form, Relationships, Lookups, Search, and Network Trace. The main content area is titled 'Map Administration' and shows the 'Edit a Form' configuration for 'GeoScan details'.

**Form Configuration Details:**

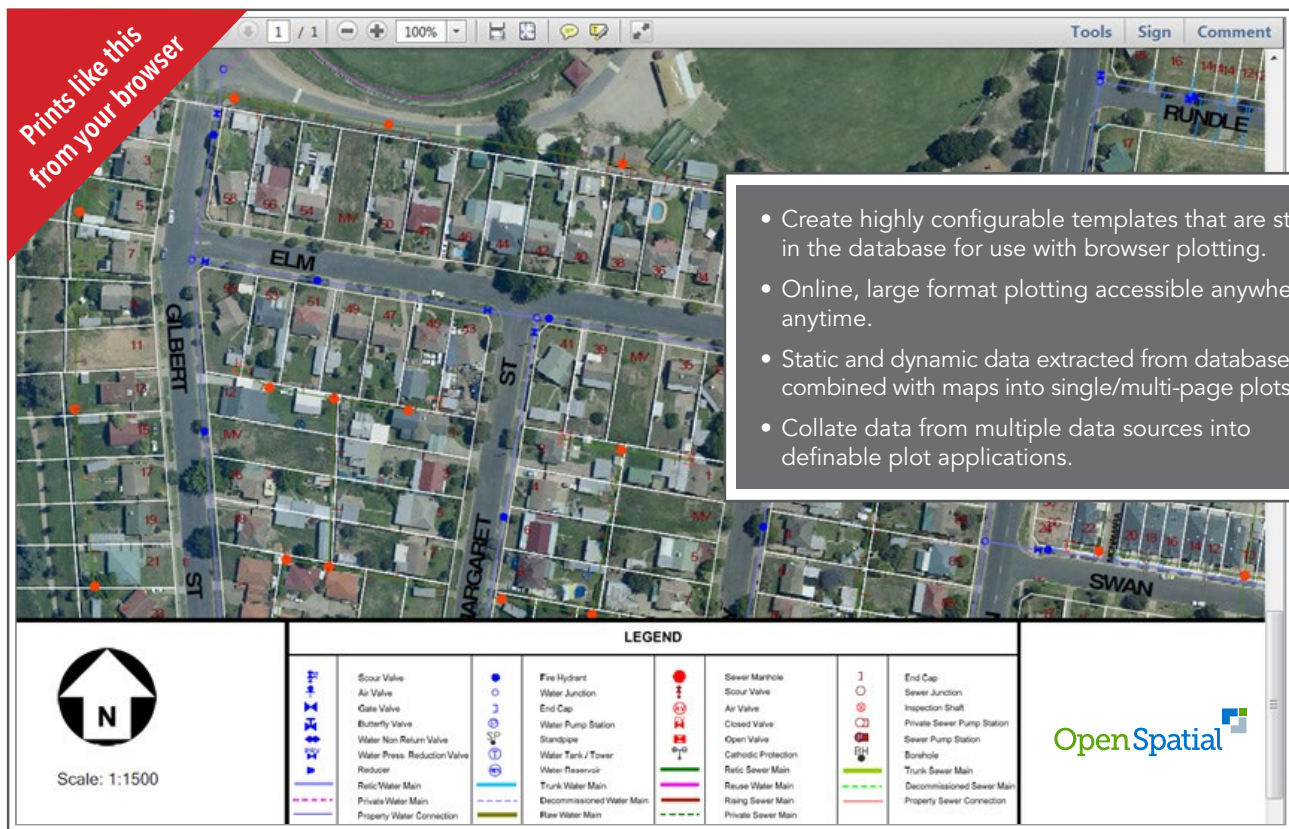
- Form Title:** GeoScan details
- Spatial Data:**
  - Map Layer: GeoScans
  - Spatial Table: SP\_VW\_GEOSCAN\_BNDR
  - Primary Key: GID
  - Link Key: GID
- Attribute Data:**
  - DataSource: A\_DEMO
  - Form Table: SP\_VW\_GEOSCAN\_BNDR
  - Primary Key: GID
  - Join Key: GID
- Define List View:**
  - Alt List: Select an alternate listview
  - Select All: ☐ Where:
  - Mail Merge: ☐
  - Columns: GID, IMG\_CATEGORY, IMG\_NAME, PROJECT\_NAME
- Define Detail View:**
  - Select All: ☐ Where:
  - Columns: COMMENTS, IMG\_CATEGORY, IMG\_DATE, IMG\_NAME

- Assign Users and Permissions
- Define Data Relationships
- Auto-discover Data Links
- Configure Searches
- Set-up Data Display Forms
- Specify Information Details

## Web-based Administration & Configuration



# Configurable High-Resolution Printing/Plotting



- Create highly configurable templates that are stored in the database for use with browser plotting.
- Online, large format plotting accessible anywhere, anytime.
- Static and dynamic data extracted from databases are combined with maps into single/multi-page plots.
- Collate data from multiple data sources into definable plot applications.

## Open Spatial Geospatial Suite

Open Spatial provides geospatial engineering solutions for managing spatial data from survey through design, construction and data management. Our technologies are based on risk averse ubiquitous platforms that bridge the gap between CAD, GIS, BIM, and asset management applications. Utilizing open standards and engineering best practices, we deliver fit-for-purpose solutions with a focus on productivity improvements, definable return on investment, and long-term savings.



Edit in AutoCAD Map, Civil 3D, store data in single database  
Multi-users, off-the-shelf applications and data models



Web-based, geospatial portal and business intelligences  
integration platform



Automate the validation and loading of data from electronic  
submittals of as-builts directly into GIS and CMMS

Scan for more  
information



OpenSpatial

openspatial.com